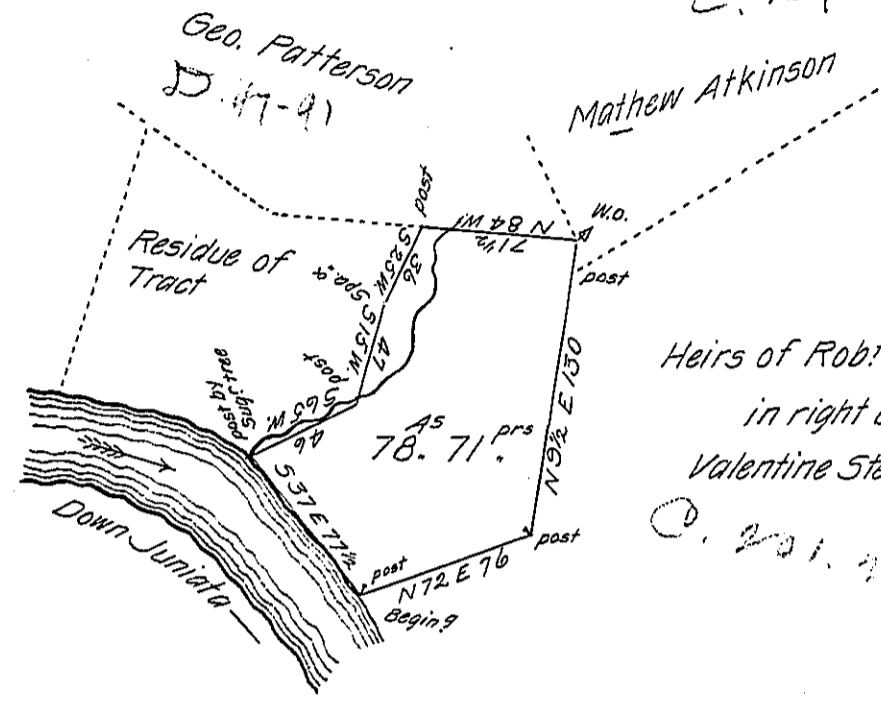


©. 157. 113. 14 - 15



Begining at Post
Course & Distance

N 72 E	76 a post
N 9 1/2 E	130 wo.
N 84 W	71 1/2 post
S 25 W	36 spa. x
S 15 W	47 post
S 65 W	46 post by Sugar tree
thence down Juniata -	
S 37 E	77 1/2 post
The place of Begining }	

Heirs of Robt Patterson
in right of
Valentine Stern

©. 201. 9-19

Draught of Seventyeight Acres and 71 Perches and the Allowance of Six P. Cent for Roads &c. Part of a Larger Tract of Land Situate in Fermanagh Township (formerly Cumberland) now Mifflin County appears Survey'd the 7th of March 1769 and said to contain 151.4 ^{AS} &c. In pursuance of an Order N^o 2912 Granted To George Patterson the 26th day of February 1767. Divided the 17th day of February 1803.

P^r William Harris D.S.

To Samuel Cochran Esquire }
Surv. Genl Pennsylvania.

IN TESTIMONY that the above is a copy of the original remaining on file in the Department of Internal Affairs of Pennsylvania, made conformably to an Act of Assembly approved the 16th day of February, 1833, I have hereunto set my Hand and caused the Seal of said Department to be affixed at Harrisburg, this tenth day of May 1906.

Isaac R. Brown
Secretary of Internal Affairs.